
The Pacific War

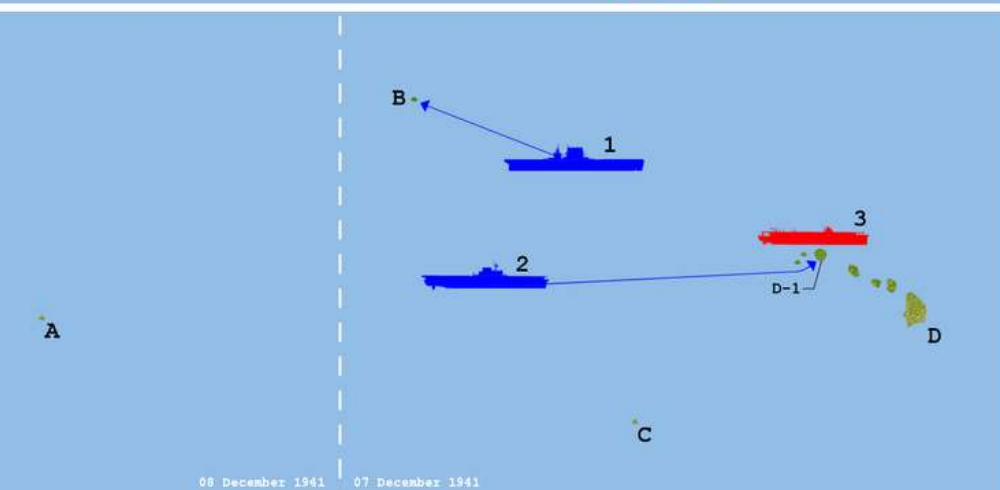
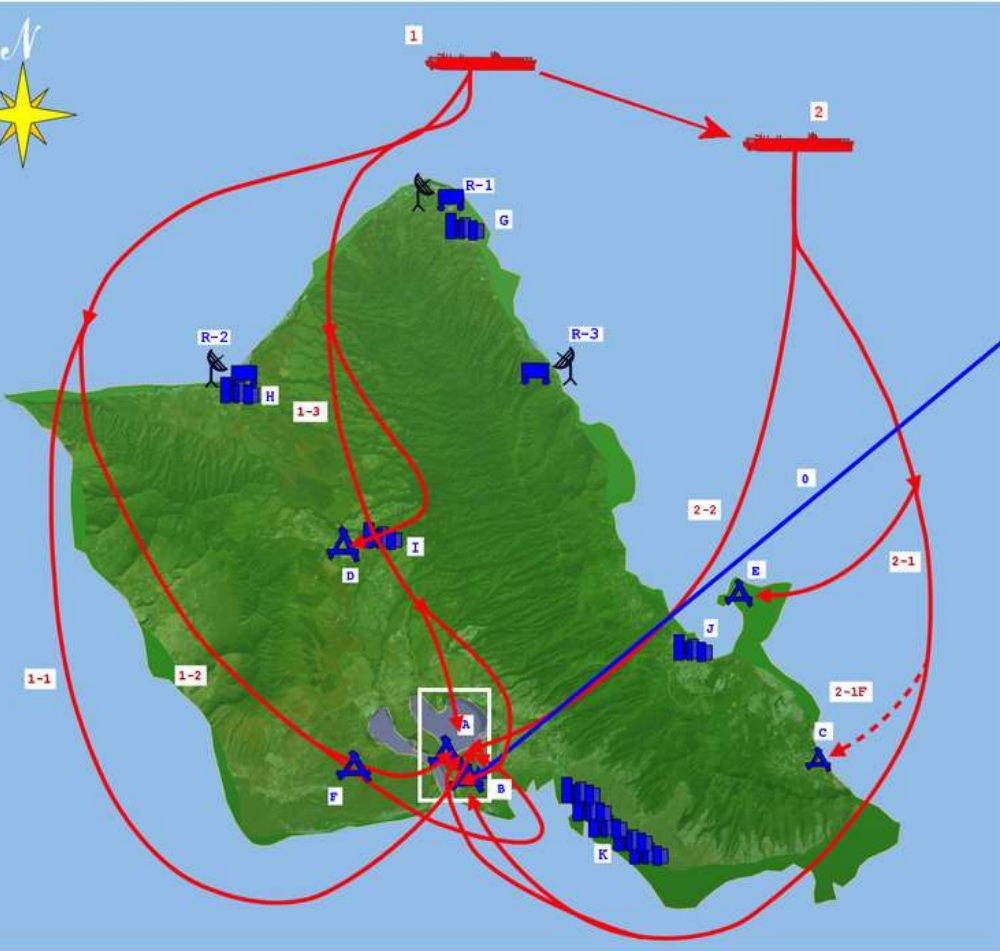
Windstar Cruises
Ross Arnold, Spring 2018

Japan & North Pacific Crossing

- *Emperors & Shoguns: A Brief History of Japan*
- *Samurai & the Code of Bushido*
- *Religions of Japan*
- *Islands of Tranquility-Japanese Gardens*
- *Japan vs. China*
- ***The Pacific War***
- *Birth of the Atomic Age: Hiroshima & Nagasaki*
- *Japanese Art & Architecture*
- *Silk Road Empires*
- *A Brief History of Korea & the Korean Conflict*
- *China's Treasure Ships*

Imperial Japan

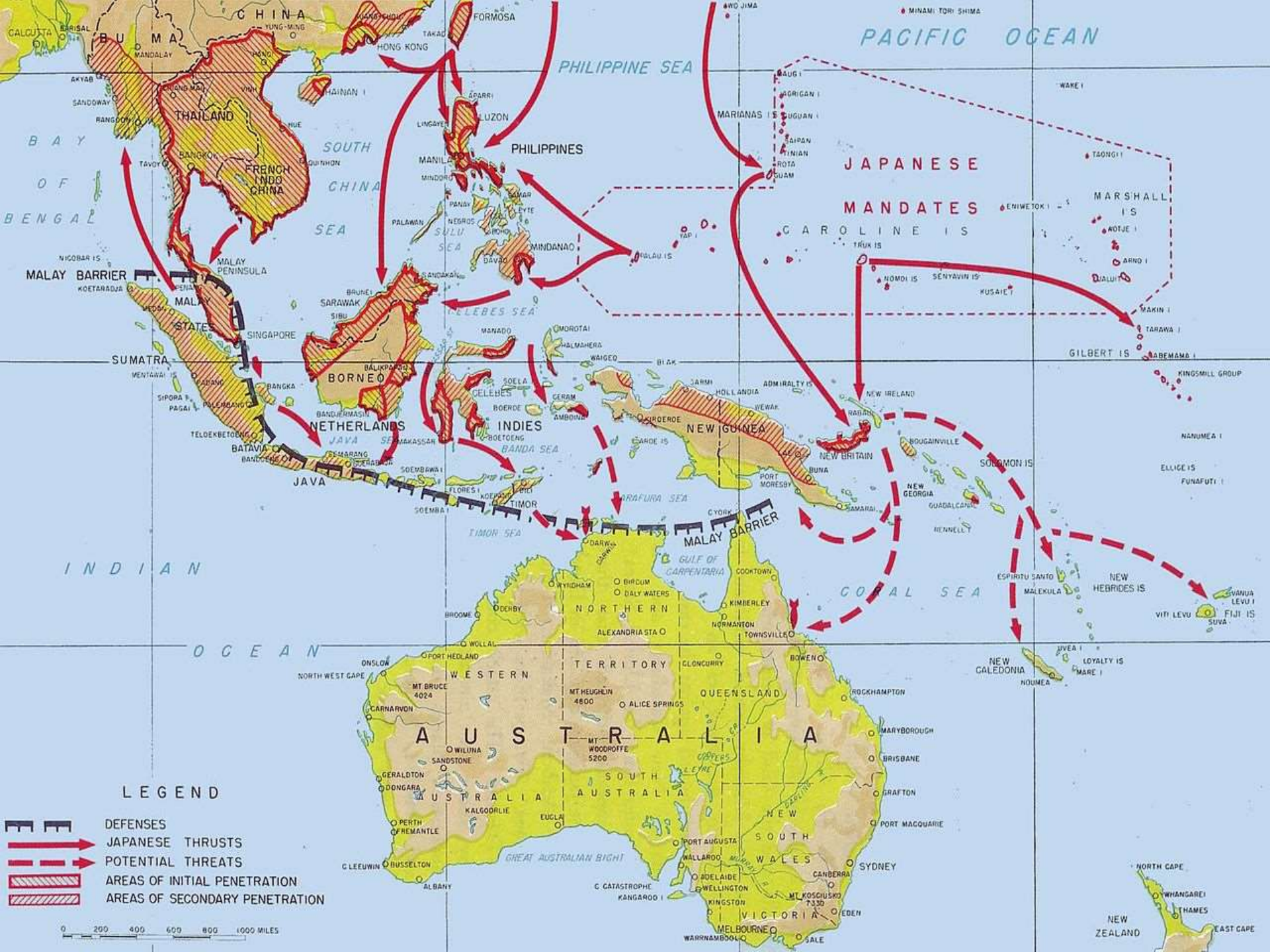




08 December 1941 07 December 1941

- Japanese empire, 1970
- Acquisitions to 1932
- Additional extent of occupation, 1937
- Additional extent of occupation, 1938
- Additional extent of occupation, 1939
- Japanese occupation of French Indochina, 1940
- Additional extent of occupation, 1942
- Demilitarized zone of Tangku Truce, 1933
- Farthest extent of Japanese conquest, 1942





PACIFIC OCEAN

PHILIPPINE SEA

JAPANESE MANDATES

PHILIPPINES

SOUTH CHINA SEA

BAY OF BENGAL

MALAY BARRIER

SUMATRA

NETHERLANDS

INDIAN OCEAN

OCEAN

CORAL SEA

TIMOR SEA

MALAY BARRIER

GULF OF CARPENTARIA

A U S T R A L I A

A U S T R A L I A

A U S T R A L I A

A U S T R A L I A

A U S T R A L I A






A U S T R A L I A

A U S T R A L I A

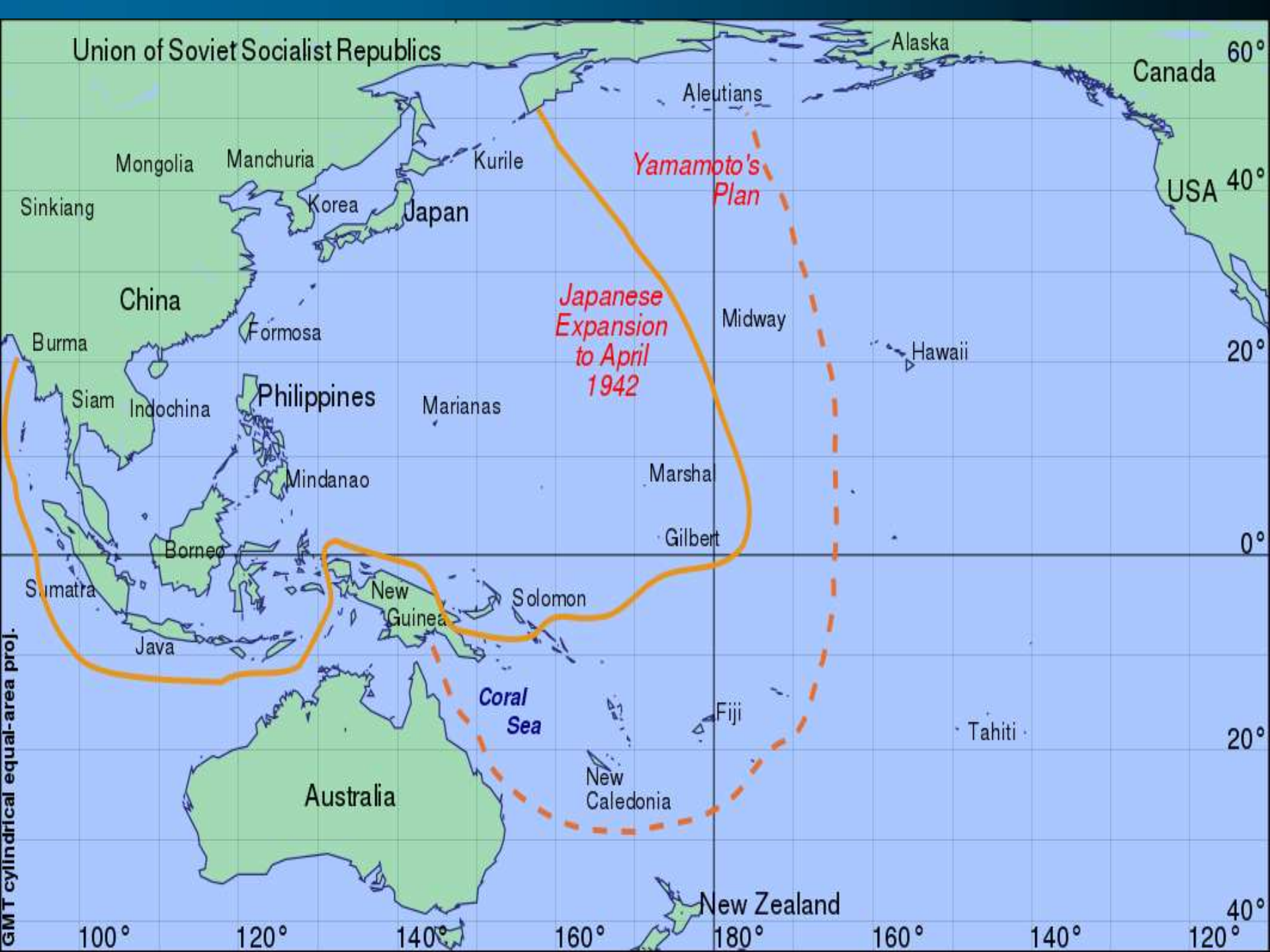
A U S T R A L I A

A U S T R A L I A

LEGEND

-  DEFENSES
-  JAPANESE THRUSTS
-  POTENTIAL THREATS
-  AREAS OF INITIAL PENETRATION
-  AREAS OF SECONDARY PENETRATION

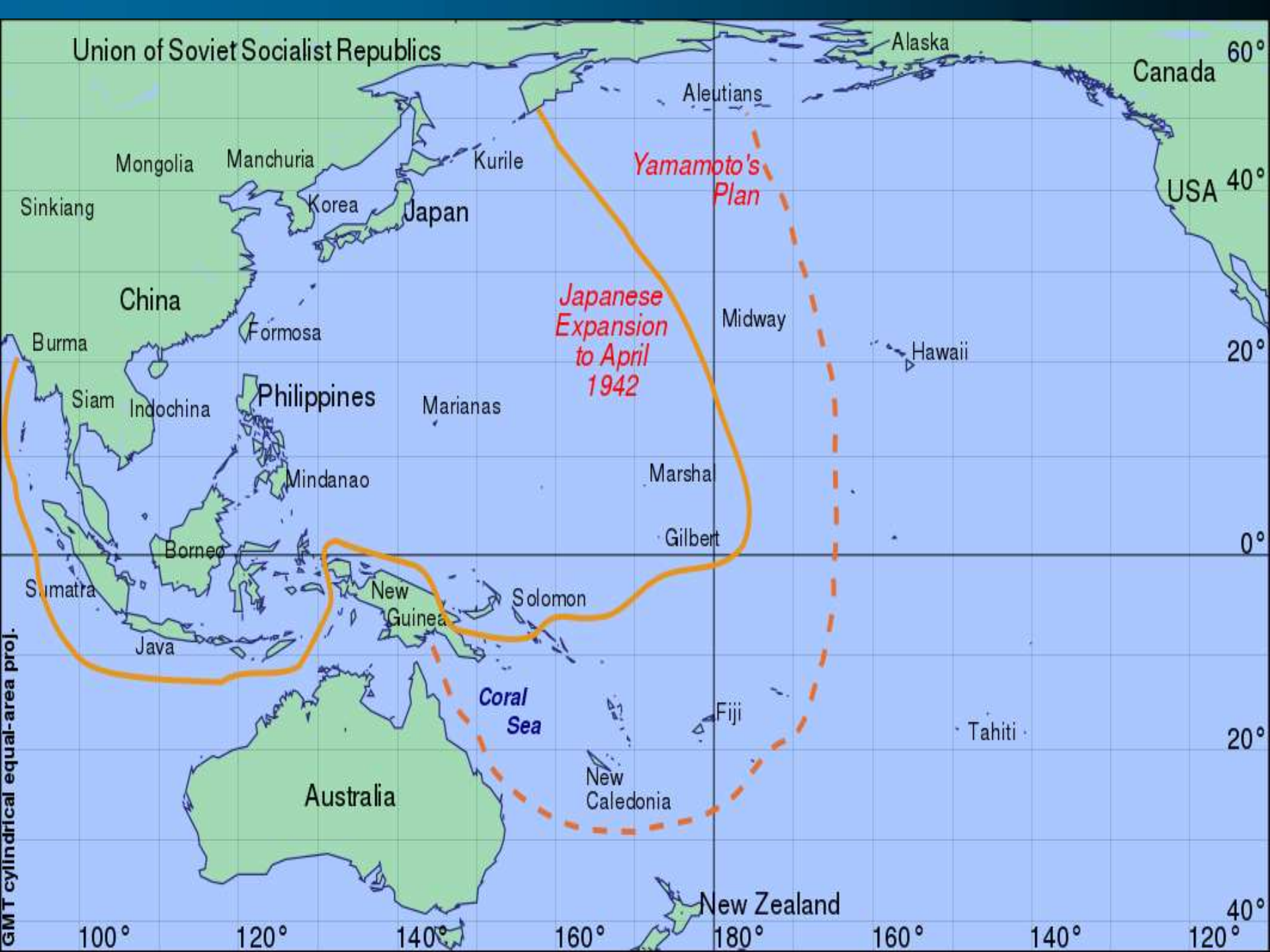
0 200 400 600 800 1000 MILES



BATTLE of the CORAL SEA

NEW IRELAND 4-8 MAY 1942





Union of Soviet Socialist Republics

Alaska

Canada

Aleutians

USA

Mongolia

Manchuria

Kurile

Yamamoto's Plan

Sinkiang

Korea

Japan

Japanese Expansion to April 1942

Midway

Hawaii

China

Burma

Formosa

Siam

Indochina

Philippines

Marianas

Mindanao

Marshall

Borneo

Gilbert

Sumatra

Java

New Guinea

Solomon

Coral Sea

Fiji

Tahiti

Australia

New Caledonia

New Zealand

GMT cylindrical equal-area proj.

100°

120°

140°

160°

180°

160°

140°

120°

40°

20°

0°

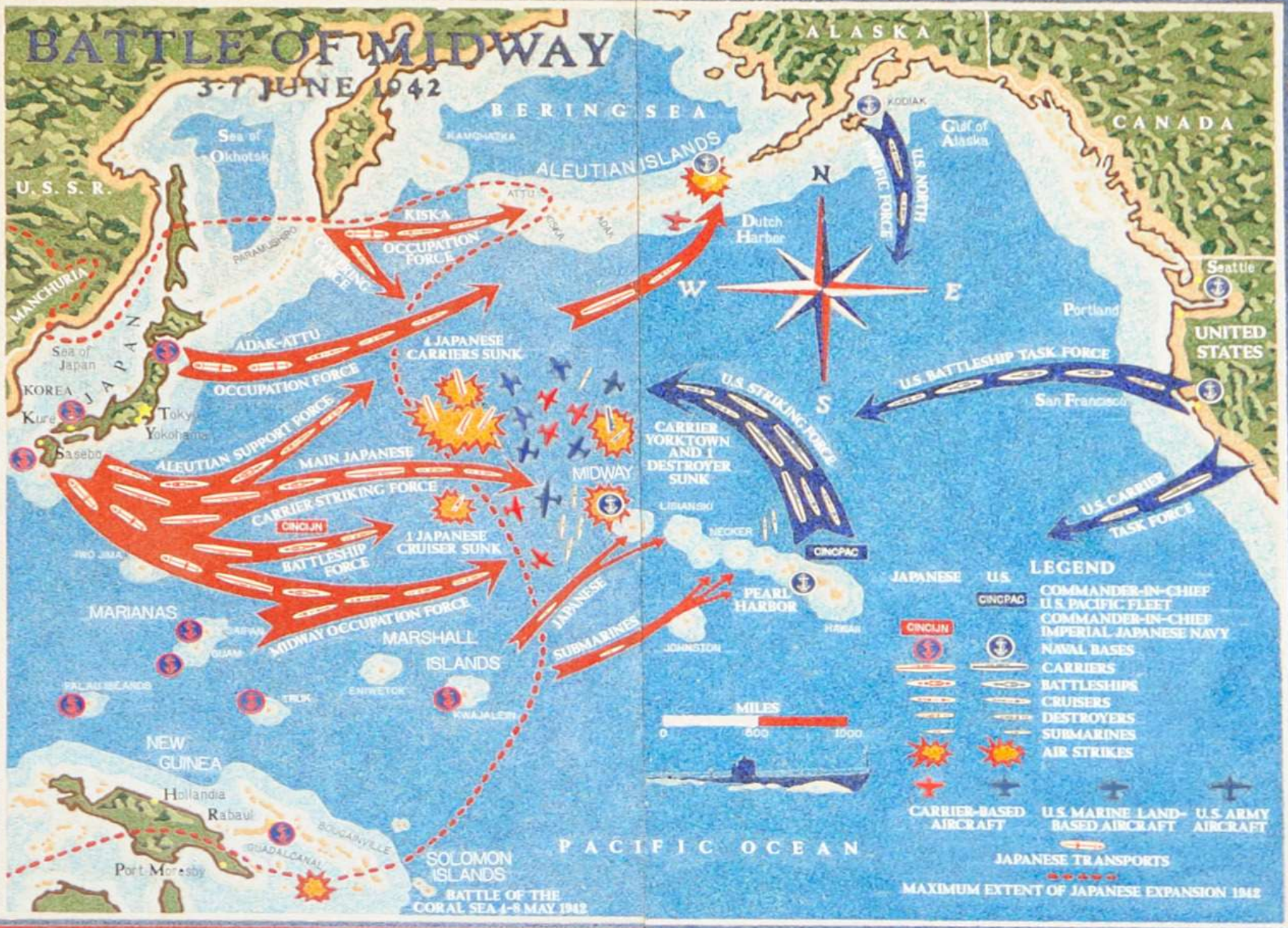
20°

40°

60°

BATTLE OF MIDWAY

3-7 JUNE 1942



LEGEND

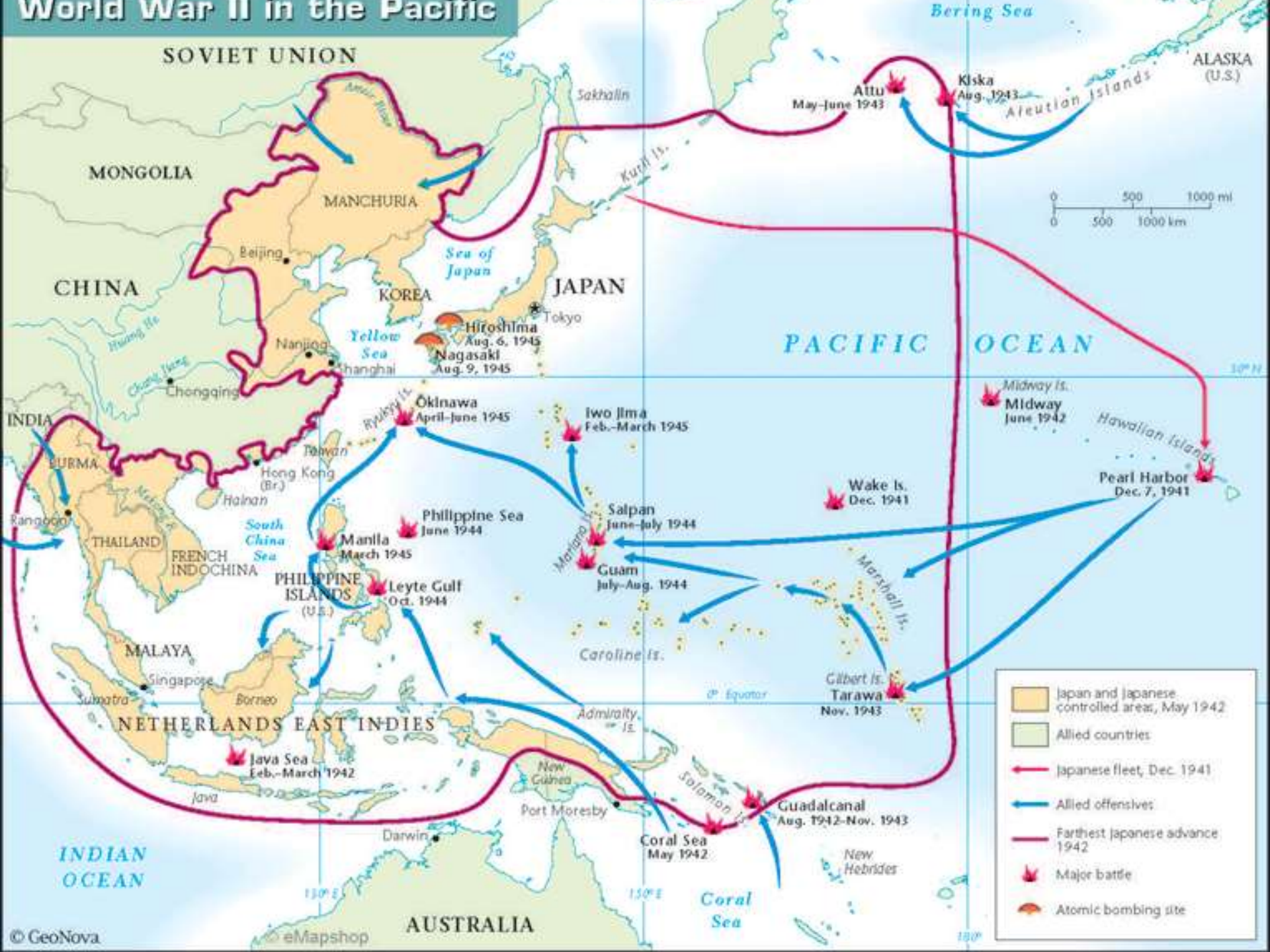
JAPANESE	U.S.	COMMANDER-IN-CHIEF
		U.S. PACIFIC FLEET
		COMMANDER-IN-CHIEF
		IMPERIAL JAPANESE NAVY
		NAVAL BASES
		CARRIERS
		BATTLESHIPS
		CRUISERS
		DESTROYERS
		SUBMARINES
		AIR STRIKES
		CARRIER-BASED AIRCRAFT
		U.S. MARINE LAND-BASED AIRCRAFT
		U.S. ARMY AIRCRAFT
		JAPANESE TRANSPORTS
		MAXIMUM EXTENT OF JAPANESE EXPANSION 1942



PACIFIC OCEAN

BATTLE OF THE CORAL SEA 4-8 MAY 1942

World War II in the Pacific

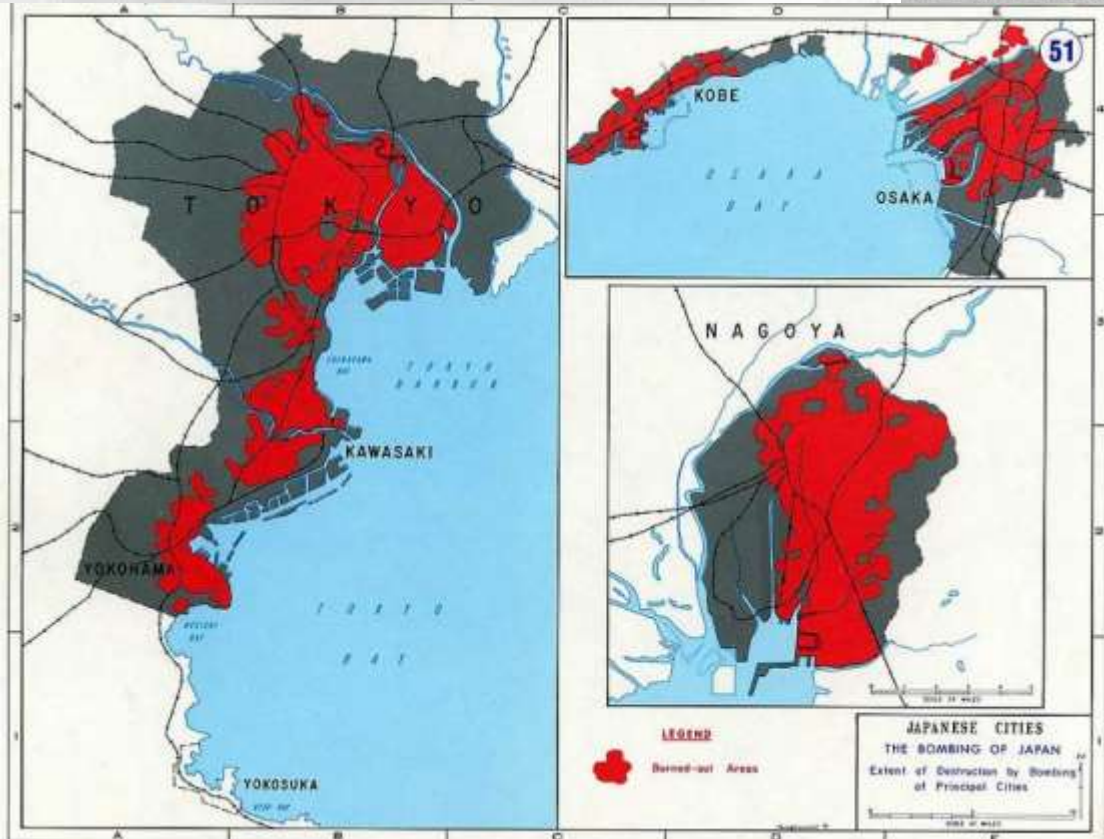


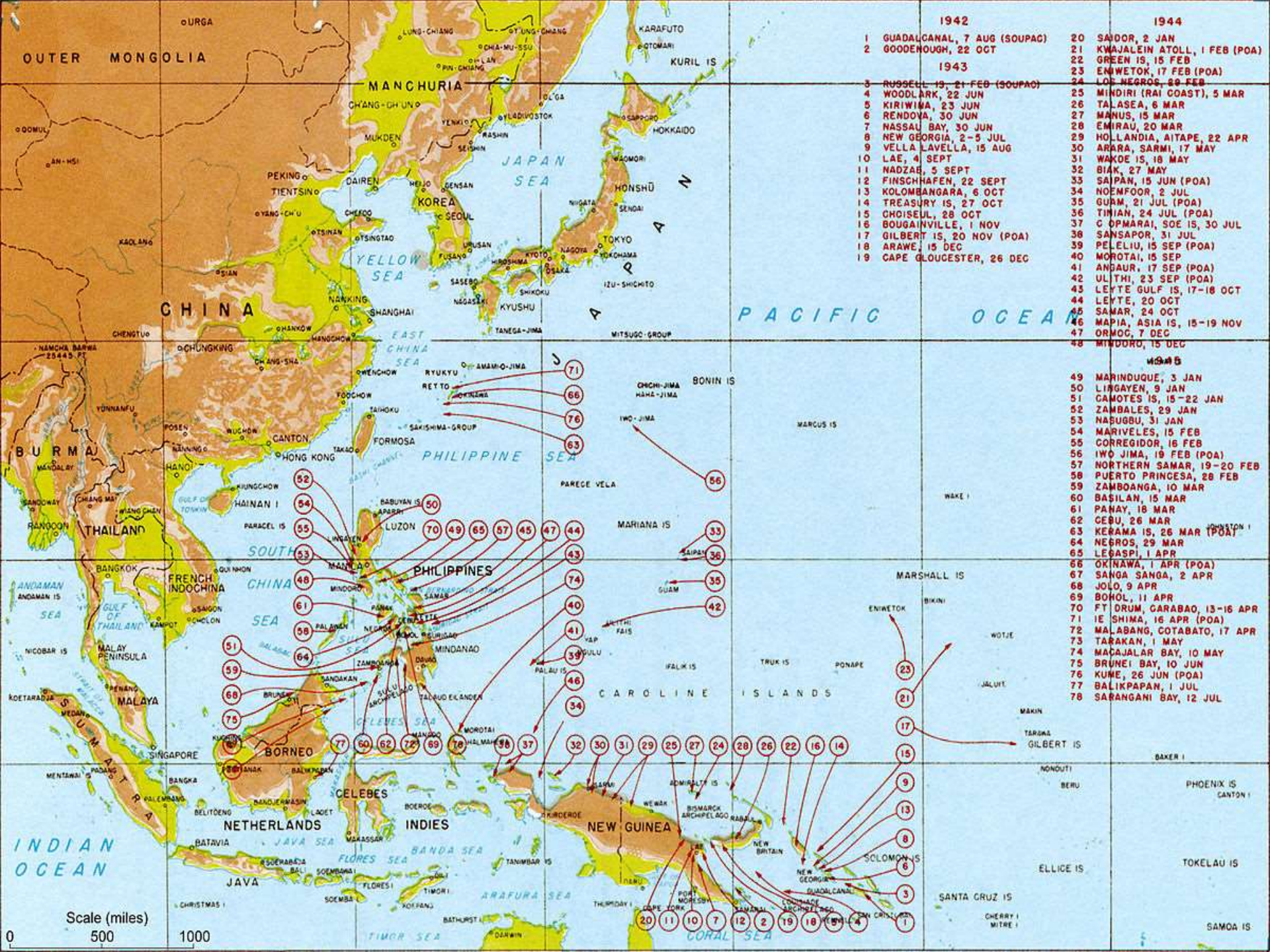


Guadalcanal Campaign

Aug. 7, 1942 – Feb. 9, 1943







- | 1942 | | 1944 | |
|------|-----------------------------|------|------------------------------|
| 1 | GUADALCANAL, 7 AUG (SOUPAC) | 20 | SAVOR, 2 JAN |
| 2 | GOODENOUGH, 22 OCT | 21 | KWAJALEIN ATOLL, 1 FEB (POA) |
| 1943 | | 22 | GREEN IS, 15 FEB |
| 3 | RUSSELL IS, 21 FEB (SOUPAC) | 23 | ENIWETOK, 17 FEB (POA) |
| 4 | WOODLARK, 22 JUN | 24 | LOS NEGROS, 29 FEB |
| 5 | KIRIWIWA, 23 JUN | 25 | MINDIRI (RAI COAST), 5 MAR |
| 6 | RENOVA, 30 JUN | 26 | TALASEA, 6 MAR |
| 7 | NASSAU BAY, 30 JUN | 27 | MANUS, 15 MAR |
| 8 | NEW GEORGIA, 2-5 JUL | 28 | EMIRAU, 20 MAR |
| 9 | VELLA LAVELLA, 15 AUG | 29 | HOLLANDIA, AITAPE, 22 APR |
| 10 | LAE, 4 SEPT | 30 | ARARA, SARMI, 17 MAY |
| 11 | NADZAB, 5 SEPT | 31 | WAKOE IS, 18 MAY |
| 12 | FINSHAFEN, 22 SEPT | 32 | BIAK, 27 MAY |
| 13 | KOLOMBANGARA, 6 OCT | 33 | SAIPAN, 15 JUN (POA) |
| 14 | TREASURY IS, 27 OCT | 34 | NOEMFOOR, 2 JUL |
| 15 | CHOISEUL, 28 OCT | 35 | GURM, 21 JUL (POA) |
| 16 | BOUGAINVILLE, 1 NOV | 36 | TIHIAN, 24 JUL (POA) |
| 17 | GILBERT IS, 20 NOV (POA) | 37 | C OPMARAI, SOE IS, 30 JUL |
| 18 | ARAWA, 15 DEC | 38 | SANSAPOR, 31 JUL |
| 19 | CAPE GLOUCESTER, 26 DEC | 39 | PELELIU, 15 SEP (POA) |
| | | 40 | MOROTAI, 15 SEP |
| | | 41 | ANGAUR, 17 SEP (POA) |
| | | 42 | ULITHI, 23 SEP (POA) |
| | | 43 | LEYTE GULF IS, 17-18 OCT |
| | | 44 | LEYTE, 20 OCT |
| | | 45 | SAMAR, 24 OCT |
| | | 46 | MAPIA, ASIA IS, 15-19 NOV |
| | | 47 | ORMOC, 7 DEC |
| | | 48 | MINDORO, 15 DEC |

- | 1945 | |
|------|-----------------------------|
| 49 | MARINDUQUE, 3 JAN |
| 50 | LINGAYEN, 9 JAN |
| 51 | CAMOTES IS, 15-22 JAN |
| 52 | ZAMBALES, 29 JAN |
| 53 | NABUGBU, 31 JAN |
| 54 | MARIVELES, 15 FEB |
| 55 | CORREGIDOR, 16 FEB |
| 56 | IWO JIMA, 19 FEB (POA) |
| 57 | NORTHERN SAMAR, 19-20 FEB |
| 58 | PUERTO PRINCESA, 28 FEB |
| 59 | ZAMBOANGA, 10 MAR |
| 60 | BASILAN, 15 MAR |
| 61 | PANAY, 18 MAR |
| 62 | CEBU, 26 MAR |
| 63 | KERAMA IS, 26 MAR (POA) |
| 64 | NEGROS, 29 MAR |
| 65 | LEGASPI, 1 APR |
| 66 | OKINAWA, 1 APR (POA) |
| 67 | SANGA SANGA, 2 APR |
| 68 | JOLO, 9 APR |
| 69 | BOHOL, 11 APR |
| 70 | FT DRUM, CARABAO, 13-16 APR |
| 71 | IE SHIMA, 16 APR (POA) |
| 72 | MALABANG, COTABATO, 17 APR |
| 73 | TARAKAN, 1 MAY |
| 74 | MAJALAJAR BAY, 10 MAY |
| 75 | BRUNEI BAY, 10 JUN |
| 76 | KUME, 26 JUN (POA) |
| 77 | BALIKPAPAN, 1 JUL |
| 78 | SARANGANI BAY, 12 JUL |

Scale (miles)
0 500 1000



*Ie Shima — Typical Defense Position
On Face Of Iegusugu Pinnacle*



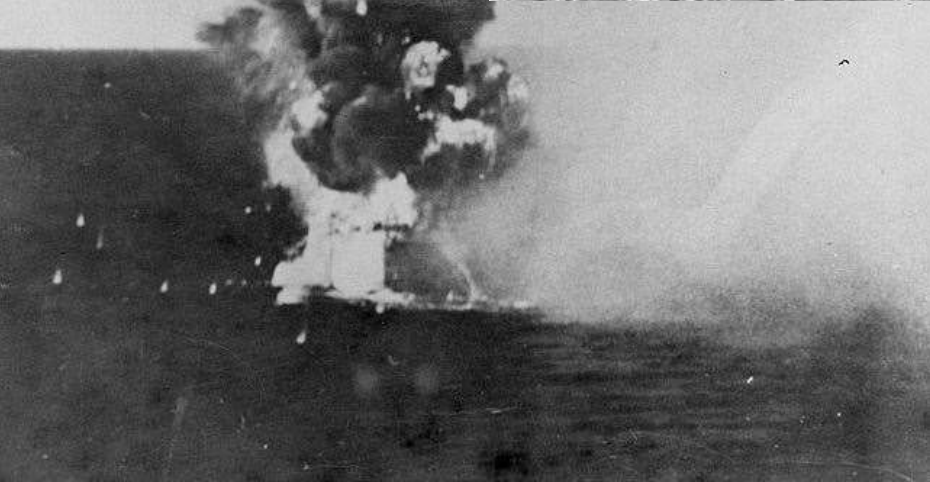
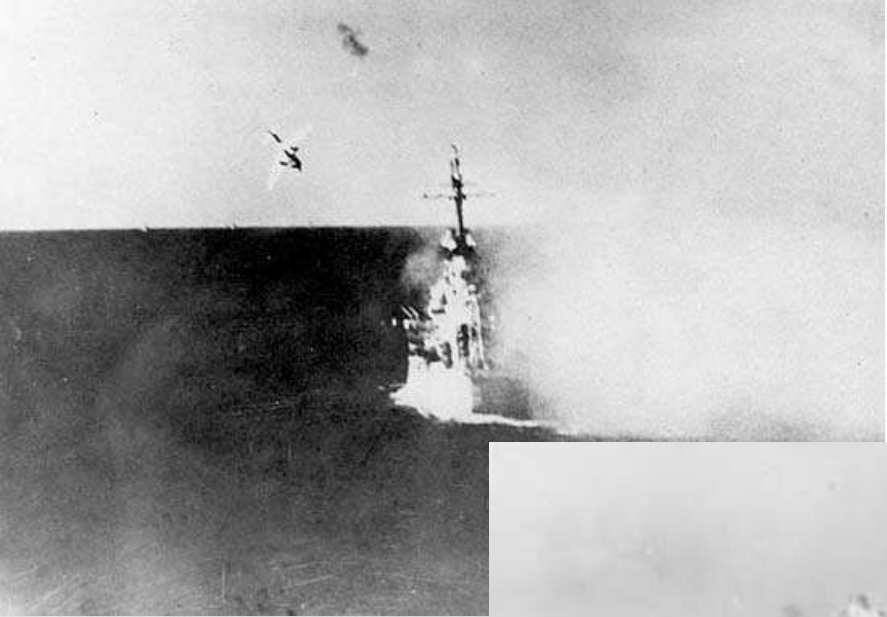
LEGEND

- A North-south road
- B Approach road, booby-trapped and mined
- C Barbed wire
- D Entrance to tunnel system
- E Antitank trench, 15 feet deep

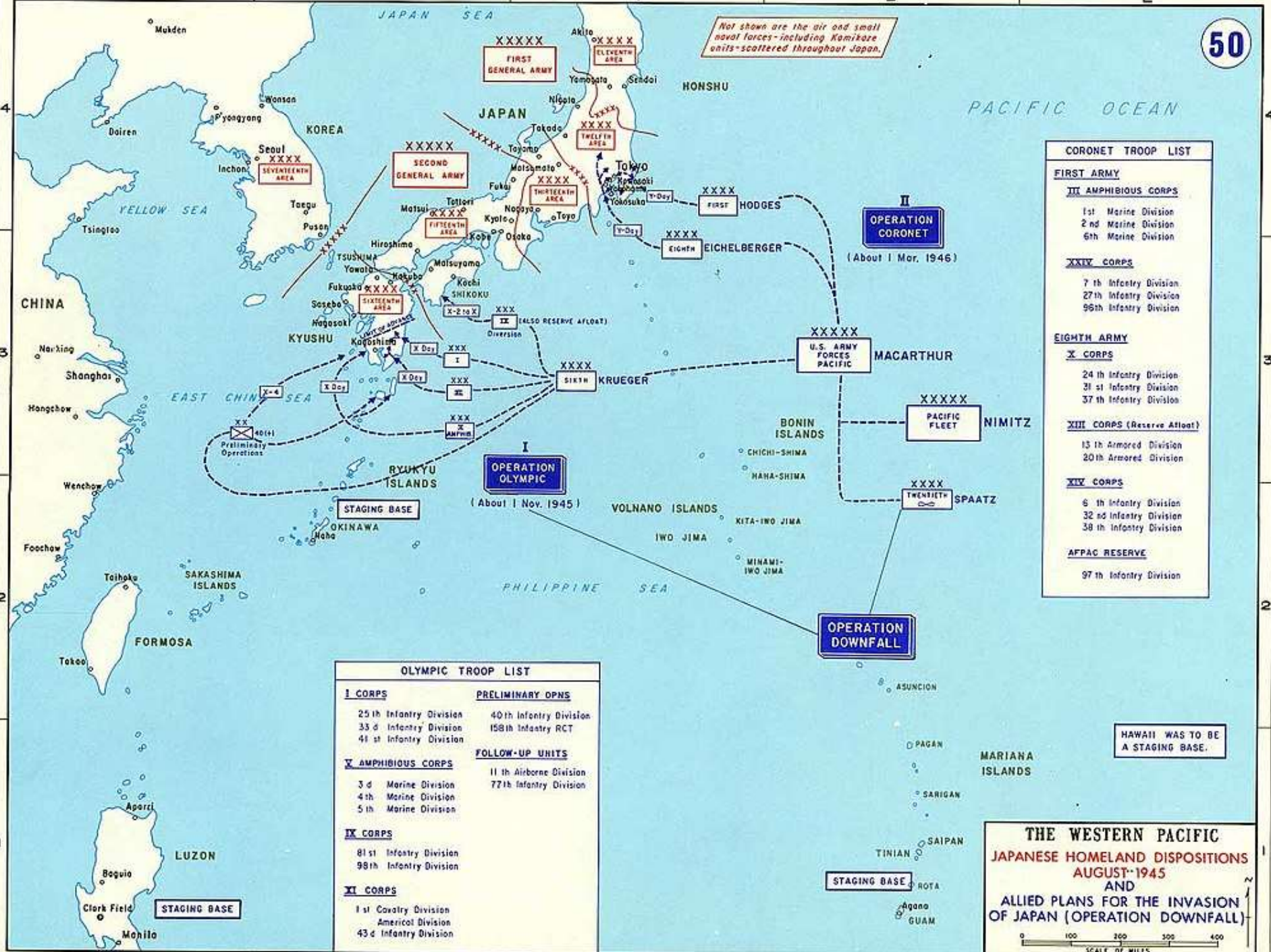
Numbers indicate various parts of tunnel system:

- 1-4 Tunnel entrance
- 5-6 Auxiliary shaft
- 7 Main tunnel
- 8-11 Cave entrance







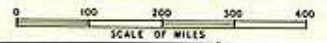


Not shown are the air and small naval forces - including Kamikaze units - scattered throughout Japan.

CORONET TROOP LIST	
FIRST ARMY	
III AMPHIBIOUS CORPS	
1st Marine Division	
2nd Marine Division	
6th Marine Division	
XXIV CORPS	
7th Infantry Division	
27th Infantry Division	
96th Infantry Division	
EIGHTH ARMY	
X CORPS	
24th Infantry Division	
31st Infantry Division	
37th Infantry Division	
XIII CORPS (Reserve Afloat)	
13th Armored Division	
20th Armored Division	
XIV CORPS	
6th Infantry Division	
32nd Infantry Division	
38th Infantry Division	
APPAC RESERVE	
97th Infantry Division	

OLYMPIC TROOP LIST	
I CORPS	
25th Infantry Division	
33rd Infantry Division	
41st Infantry Division	
V AMPHIBIOUS CORPS	
3rd Marine Division	
4th Marine Division	
5th Marine Division	
IX CORPS	
81st Infantry Division	
98th Infantry Division	
XI CORPS	
1st Cavalry Division	
American Division	
43rd Infantry Division	
PRELIMINARY OPNS	
40th Infantry Division	
158th Infantry RCT	
FOLLOW-UP UNITS	
11th Airborne Division	
77th Infantry Division	

**THE WESTERN PACIFIC
JAPANESE HOMELAND DISPOSITIONS
AUGUST 1945
AND
ALLIED PLANS FOR THE INVASION
OF JAPAN (OPERATION DOWNFALL)**



HAWAII WAS TO BE A STAGING BASE.





www.litchapala.org

rda@rossarnold.net