
***Birth of the Atomic Age:
Destruction of Hiroshima
and Nagasaki***

Windstar Cruises
Ross Arnold, Spring 2018

Japan & North Pacific Crossing

- ***Birth of the Atomic Age: Hiroshima & Nagasaki***
- *Japanese Art & Architecture*
- *Silk Road Empires*
- *A Brief History of China*
- *China vs. China*
- *China's Treasure Ships*
- *The Great Wall*
- *Opium Wars & the Boxer Rebellion*
- *Silk Road Empires*
- *Brief History of Korea & the Korean Conflict*



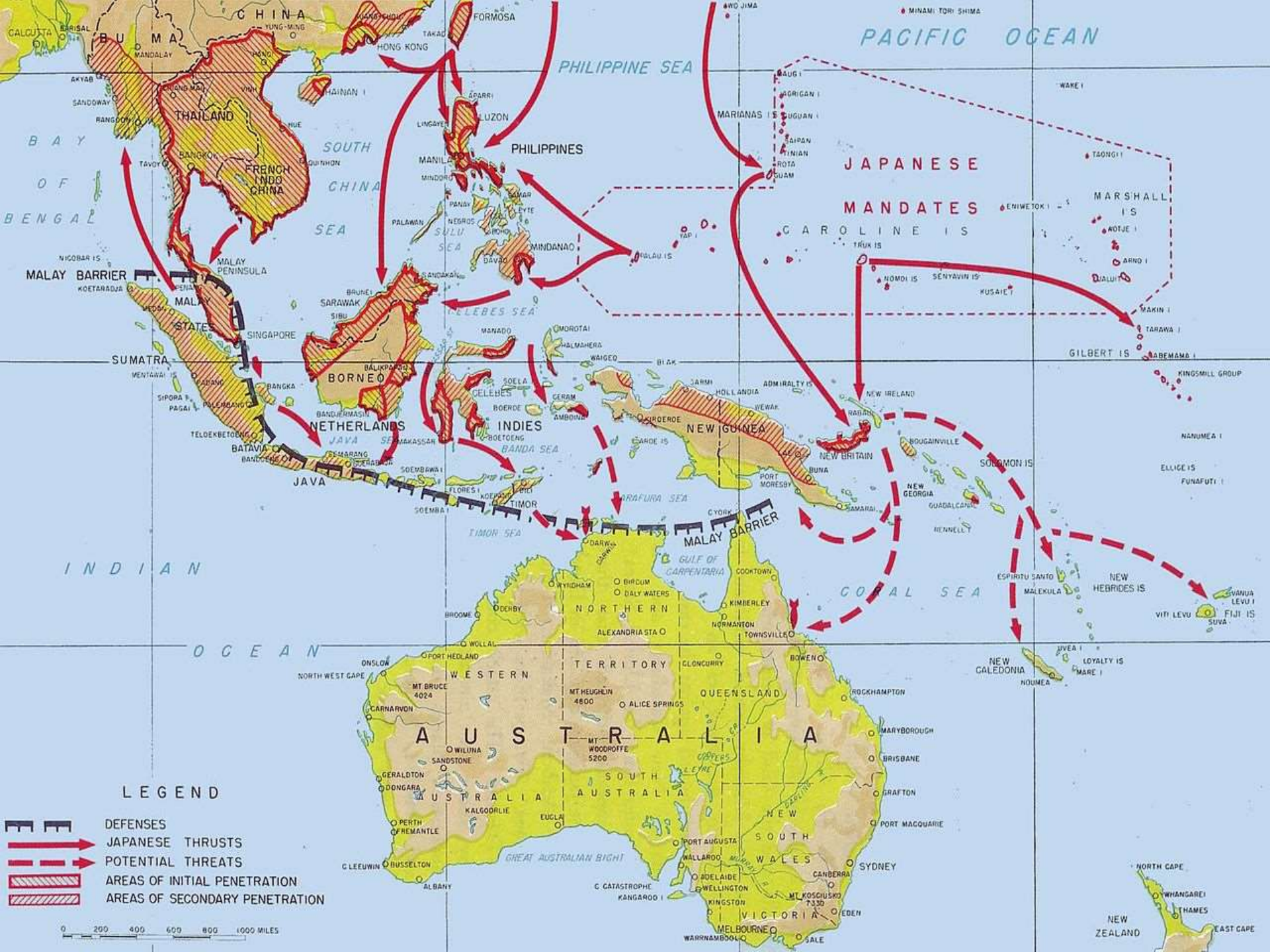
Meiji Restoration – 1866-1868

Imperial Japan



- Japanese empire, 1970
- Acquisitions to 1932
- Additional extent of occupation, 1937
- Additional extent of occupation, 1938
- Additional extent of occupation, 1939
- Japanese occupation of French Indochina, 1940
- Additional extent of occupation, 1942
- Demilitarized zone of Tangku Truce, 1933
- Farthest extent of Japanese conquest, 1942





PACIFIC OCEAN

PHILIPPINE SEA

JAPANESE MANDATES

PHILIPPINES

SOUTH CHINA SEA

BAY OF BENGAL

MALAY BARRIER

SUMATRA

NETHERLANDS INDIES

NEW GUINEA

INDIAN OCEAN

OCEAN

CORAL SEA

TIMOR SEA

MALAY BARRIER

BANDA SEA

IRAFURA SEA

CELEBES SEA

SULU SEA

MANILA

HONG-KONG

FORMOSA

BURMA

INDO-CHINA

THAILAND

FRANCE

INDO-CHINA

MALAY PENINSULA

MALAY STATES

SINGAPORE

BORNEO

JAVA

BATAVIA

INDONESIA

INDONESIA

INDONESIA

INDONESIA

INDONESIA

INDONESIA

INDONESIA

INDONESIA

INDONESIA



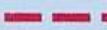


INDONESIA

INDONESIA

INDONESIA

INDONESIA

LEGEND

-  DEFENSES
-  JAPANESE THRUSTS
-  POTENTIAL THREATS
-  AREAS OF INITIAL PENETRATION
-  AREAS OF SECONDARY PENETRATION

0 200 400 600 800 1000 MILES

A U S T R A L I A

WESTERN AUSTRALIA

SOUTH AUSTRALIA

QUEENSLAND

NEW SOUTH WALES

VICTORIA

TERRITORY

PERTH

ADLAIDE

MELBOURNE

SYDNEY

BURBANK

WARRNAMBOOL

ALBANY

WELLINGTON

MELBOURNE

SYDNEY

WARRNAMBOOL

WARRNAMBOOL

ALBANY

WELLINGTON

MELBOURNE

SYDNEY

WARRNAMBOOL

WARRNAMBOOL

ALBANY

WELLINGTON

MELBOURNE

SYDNEY

WARRNAMBOOL

WARRNAMBOOL

NEW ZEALAND

NEW ZEALAND

NEW ZEALAND

NEW ZEALAND

NEW ZEALAND

NEW ZEALAND

NEW ZEALAND

NEW ZEALAND

NEW ZEALAND

NEW ZEALAND

NEW ZEALAND

NEW ZEALAND

NEW ZEALAND

NEW ZEALAND

NEW ZEALAND

NEW ZEALAND

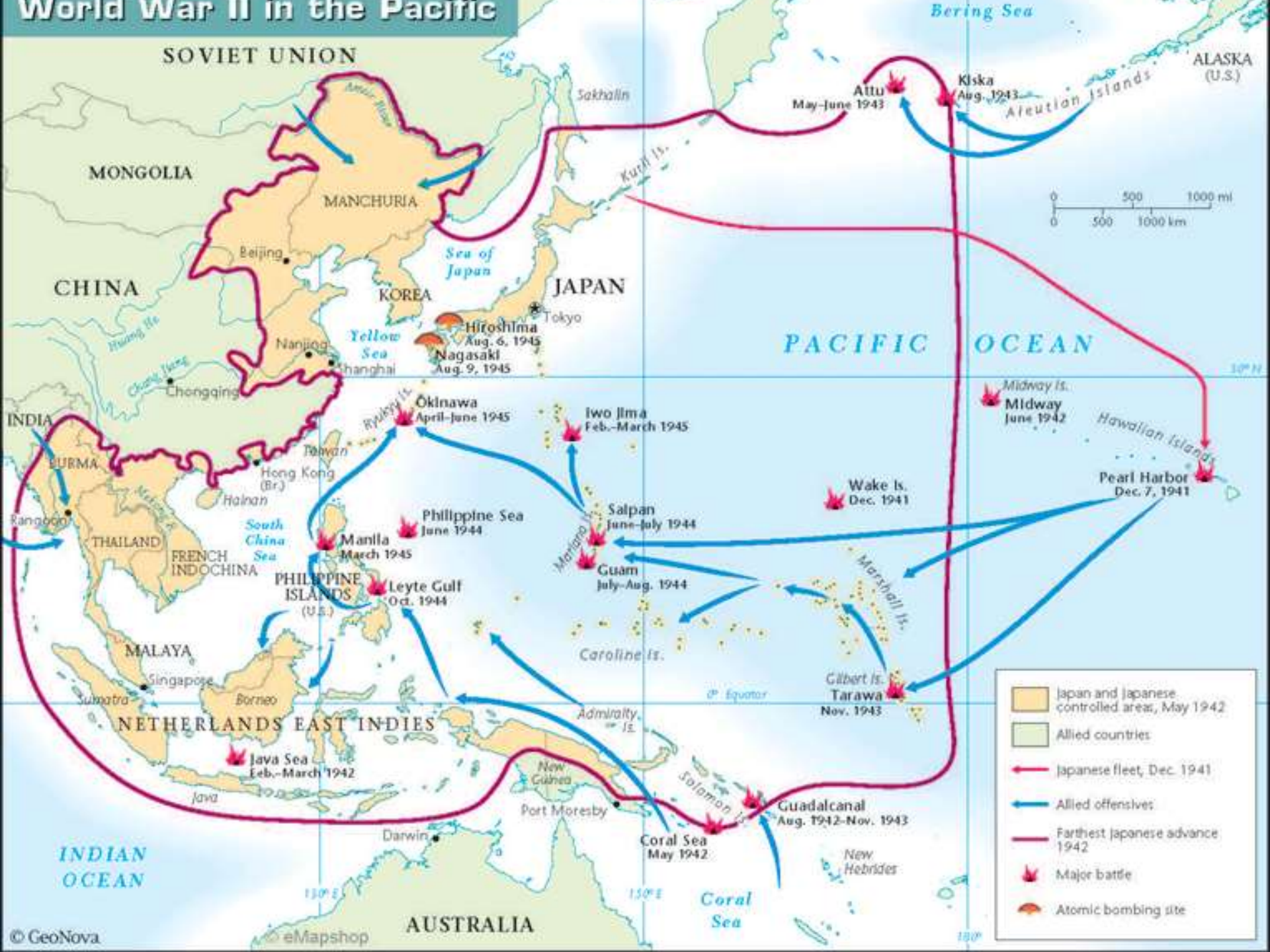
NEW ZEALAND

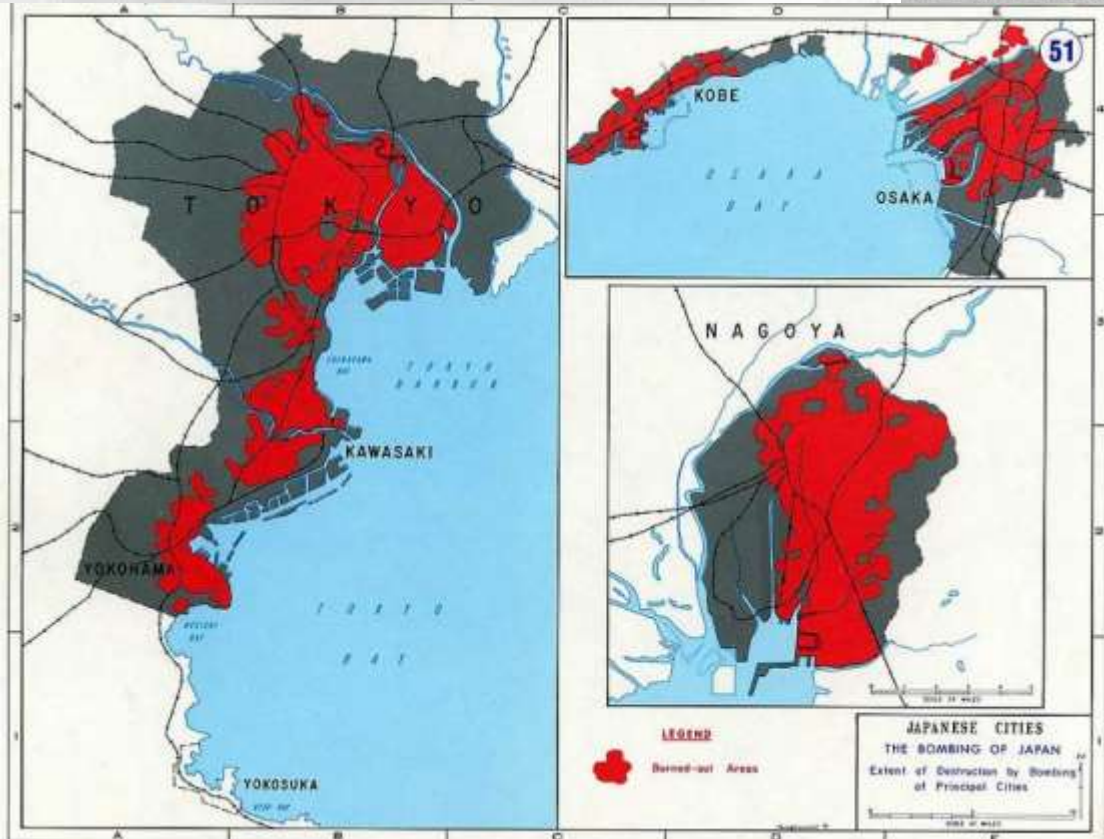
NEW ZEALAND

NEW ZEALAND

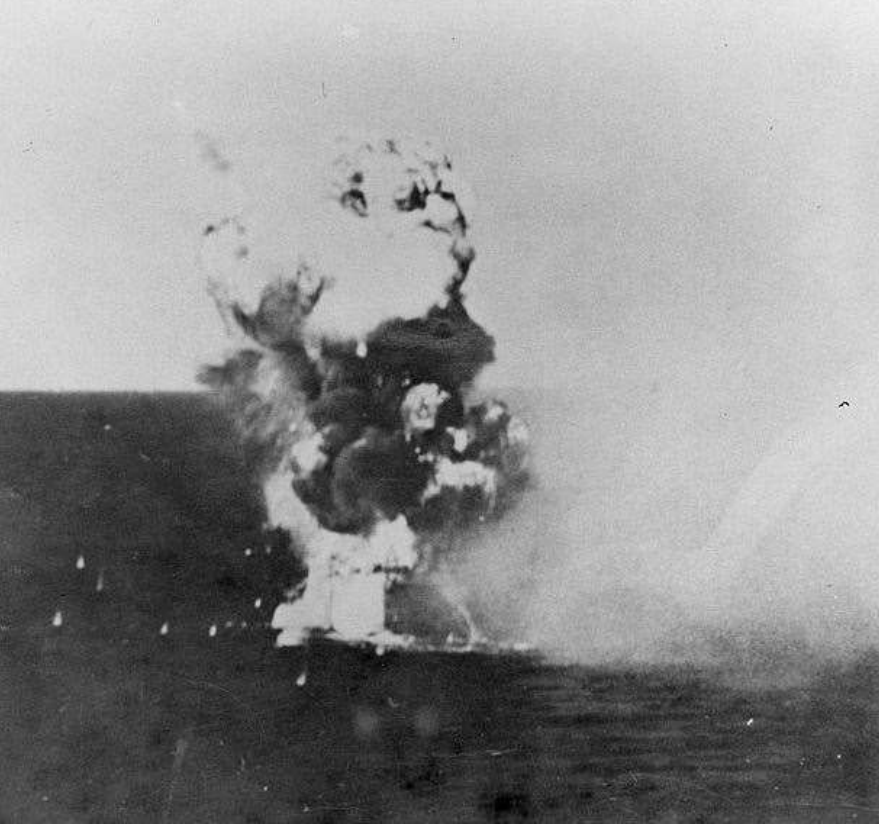
NEW ZEALAND

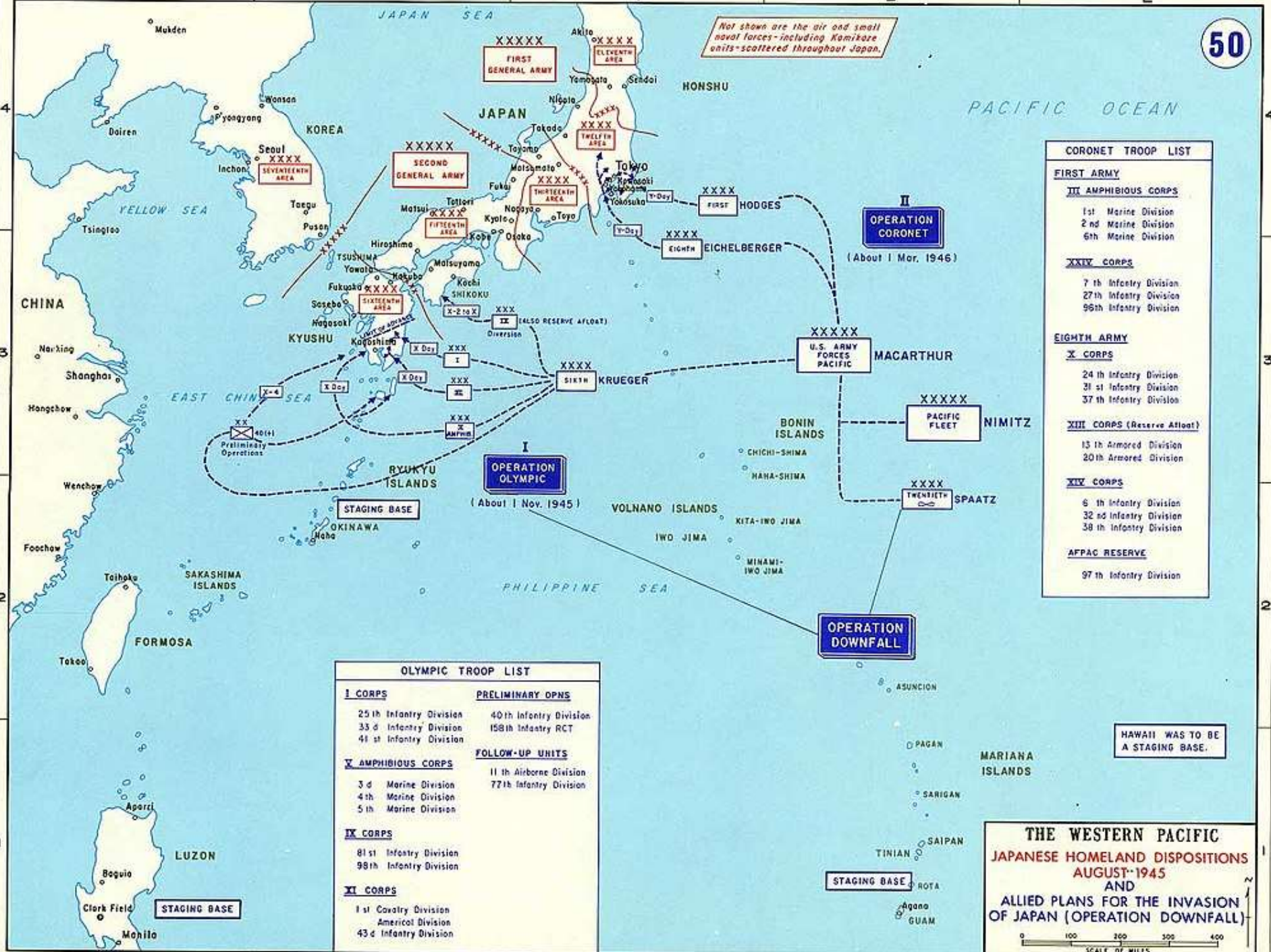
World War II in the Pacific









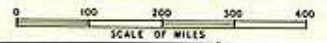


Not shown are the air and small naval forces - including Kamikaze units - scattered throughout Japan.

CORONET TROOP LIST	
FIRST ARMY	
III AMPHIBIOUS CORPS	
1st Marine Division	
2nd Marine Division	
6th Marine Division	
XXIV CORPS	
7th Infantry Division	
27th Infantry Division	
96th Infantry Division	
EIGHTH ARMY	
X CORPS	
24th Infantry Division	
31st Infantry Division	
37th Infantry Division	
XIII CORPS (Reserve Afloat)	
13th Armored Division	
20th Armored Division	
XIV CORPS	
6th Infantry Division	
32nd Infantry Division	
38th Infantry Division	
APPAC RESERVE	
97th Infantry Division	

OLYMPIC TROOP LIST	
I CORPS	
25th Infantry Division	
33rd Infantry Division	
41st Infantry Division	
V AMPHIBIOUS CORPS	
3d Marine Division	
4th Marine Division	
5th Marine Division	
IX CORPS	
81st Infantry Division	
98th Infantry Division	
XI CORPS	
1st Cavalry Division	
American Division	
43d Infantry Division	
PRELIMINARY OPNS	
40th Infantry Division	
158th Infantry RCT	
FOLLOW-UP UNITS	
11th Airborne Division	
77th Infantry Division	

**THE WESTERN PACIFIC
JAPANESE HOMELAND DISPOSITIONS
AUGUST 1945
AND
ALLIED PLANS FOR THE INVASION
OF JAPAN (OPERATION DOWNFALL)**



HAWAII WAS TO BE A STAGING BASE.



Manhattan Project Signature Facilities

Chemical Separations Building (T Plant)
Hanford, Washington

Metallurgical Laboratory
University of Chicago
Illinois

Manhattan Project Headquarters
Washington, D.C.

B-Reactor
Hanford,
Washington

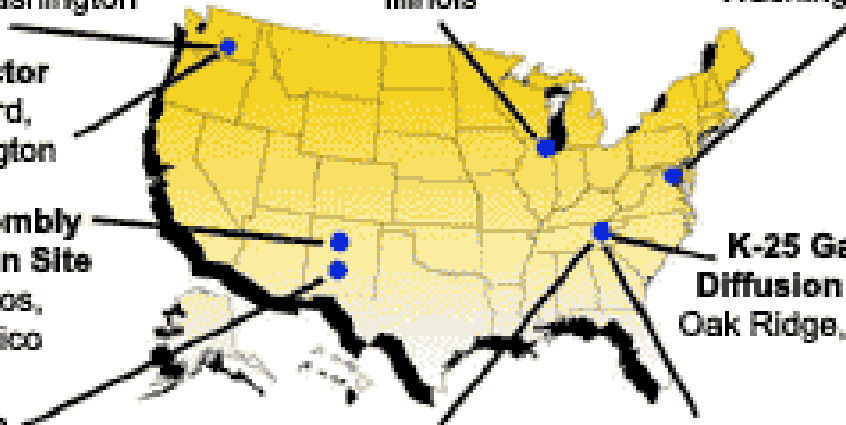
V-Site Assembly Building/Gun Site
Los Alamos,
New Mexico

Trinity Site
Alamogordo,
New Mexico

X-10 Graphite Reactor
Oak Ridge, Tennessee

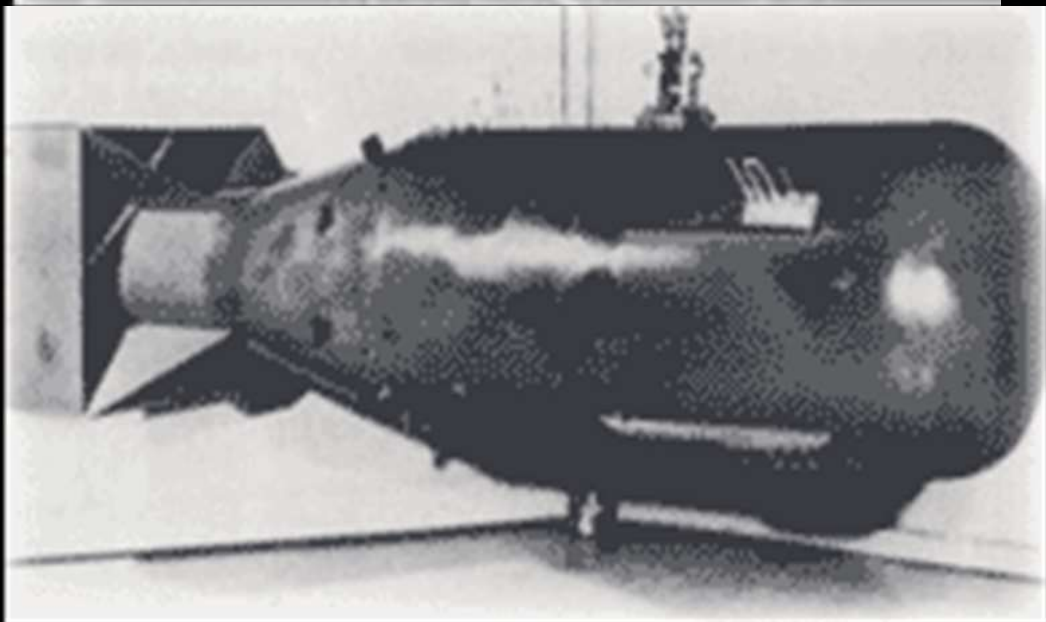
K-25 Gaseous Diffusion Process
Oak Ridge, Tennessee

Y-12 Beta-3 Racetrack
Oak Ridge, Tennessee



The Manhattan Project

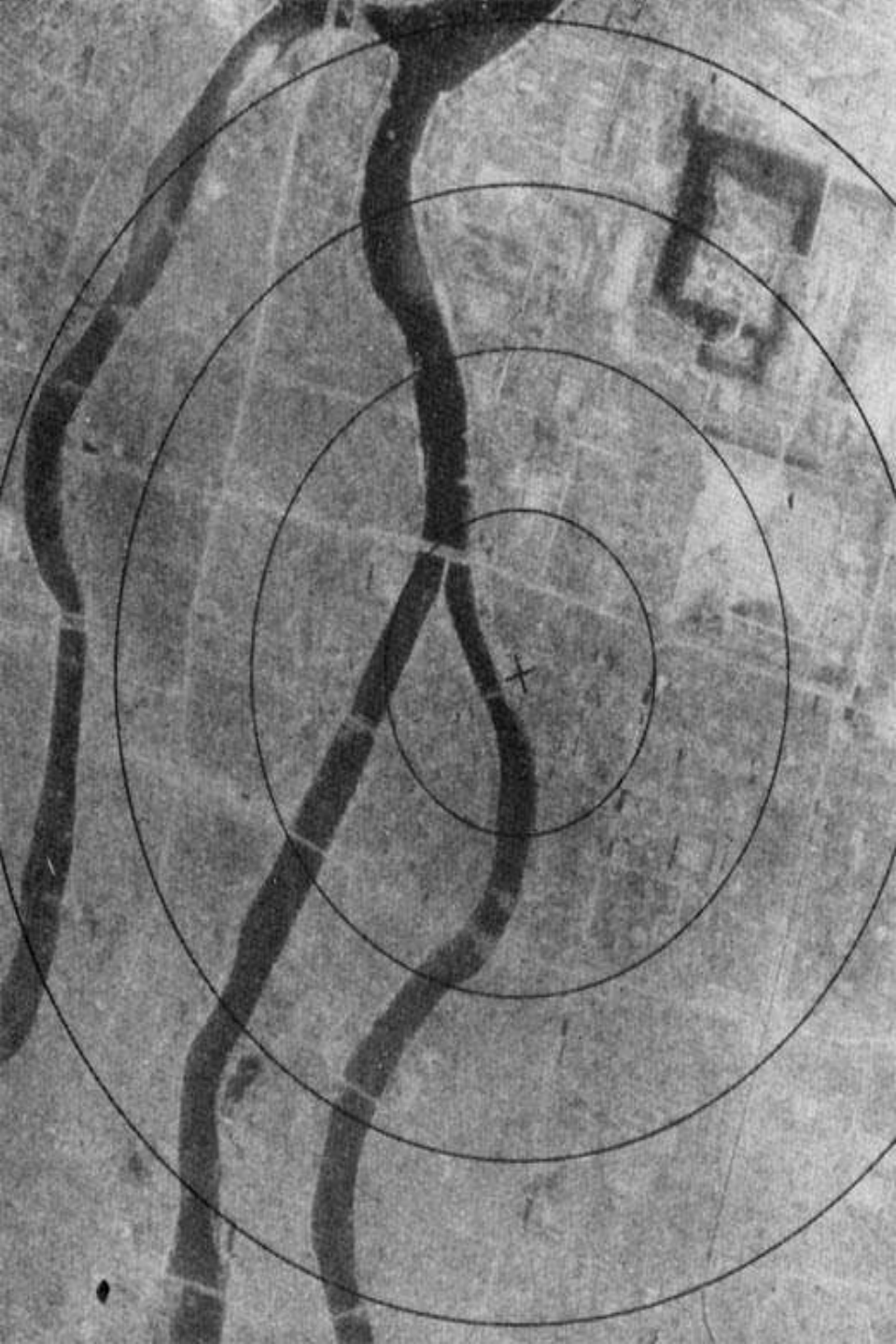


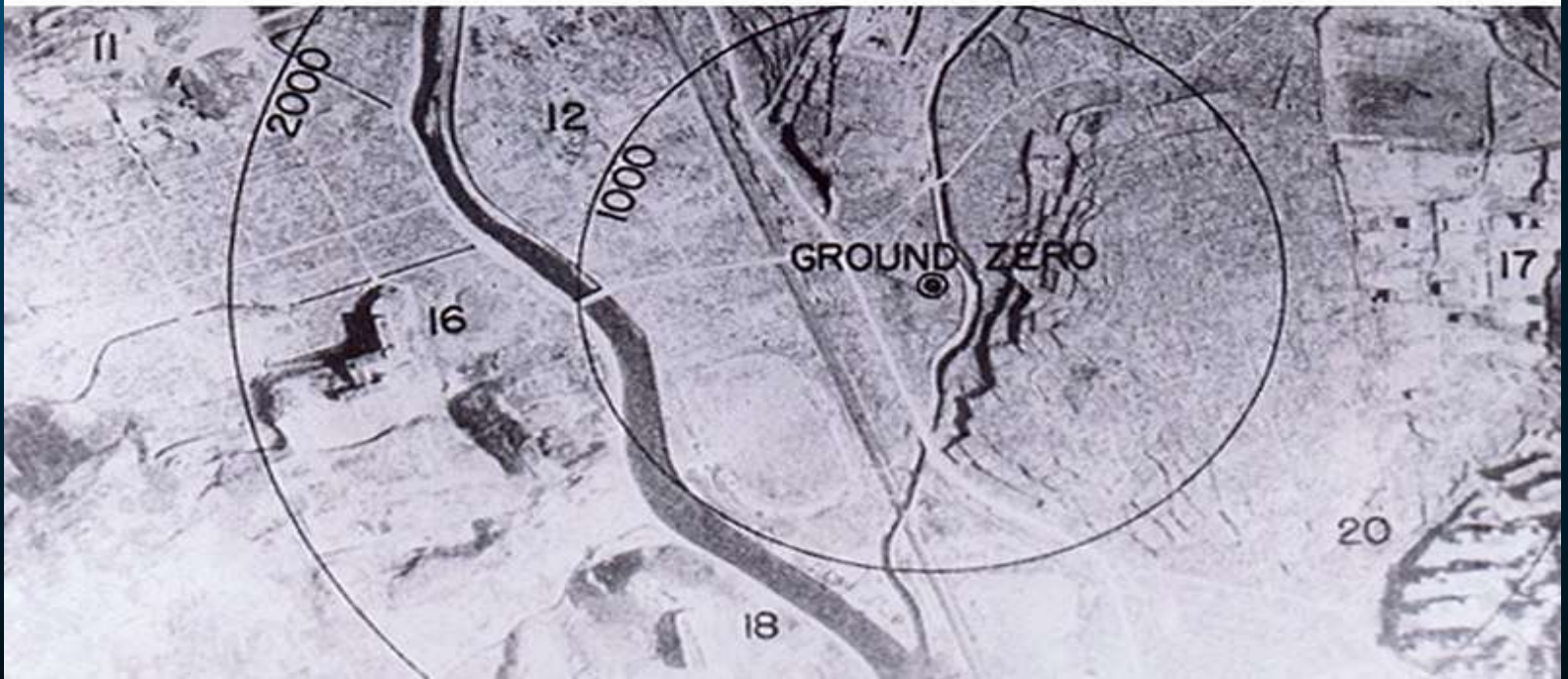


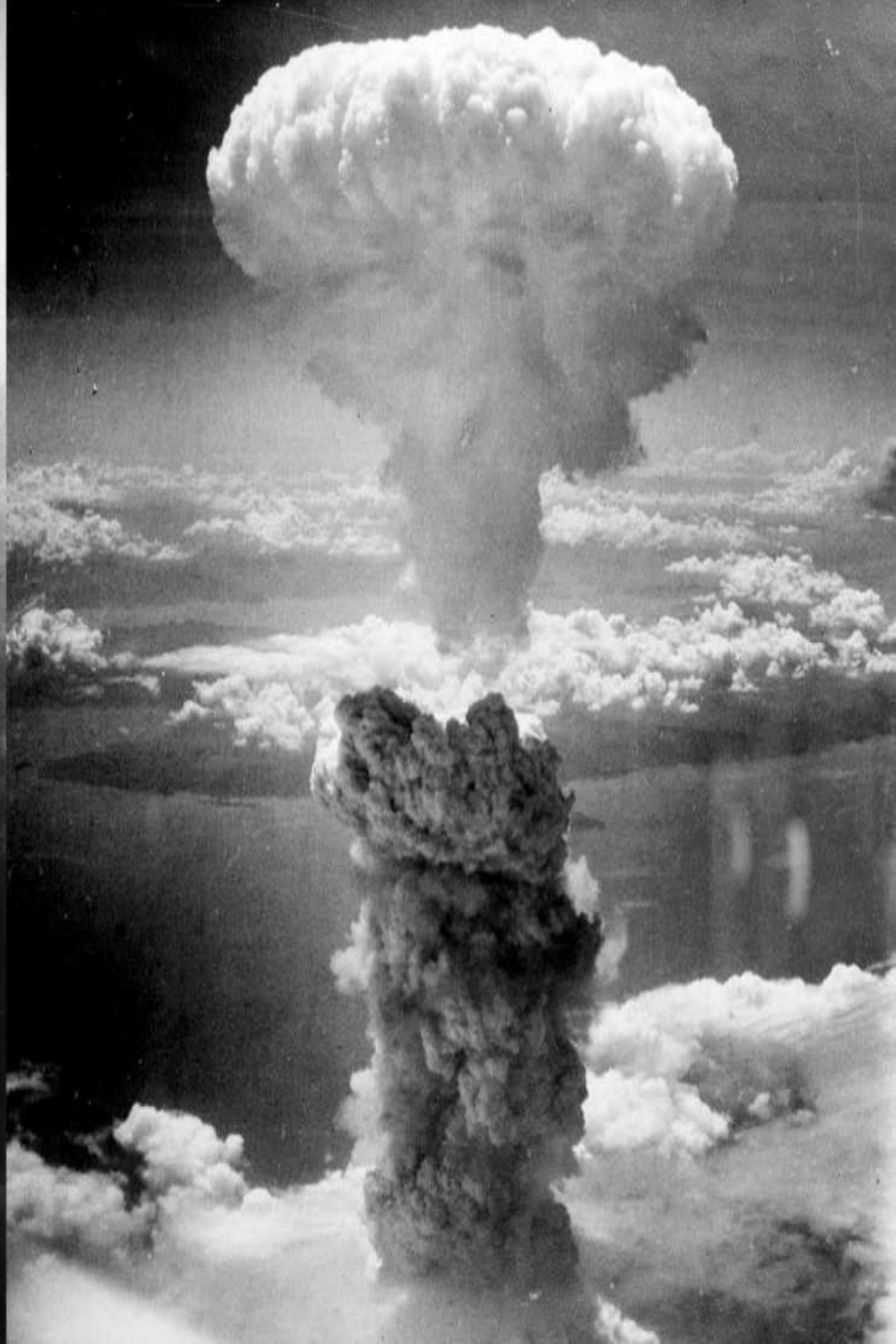
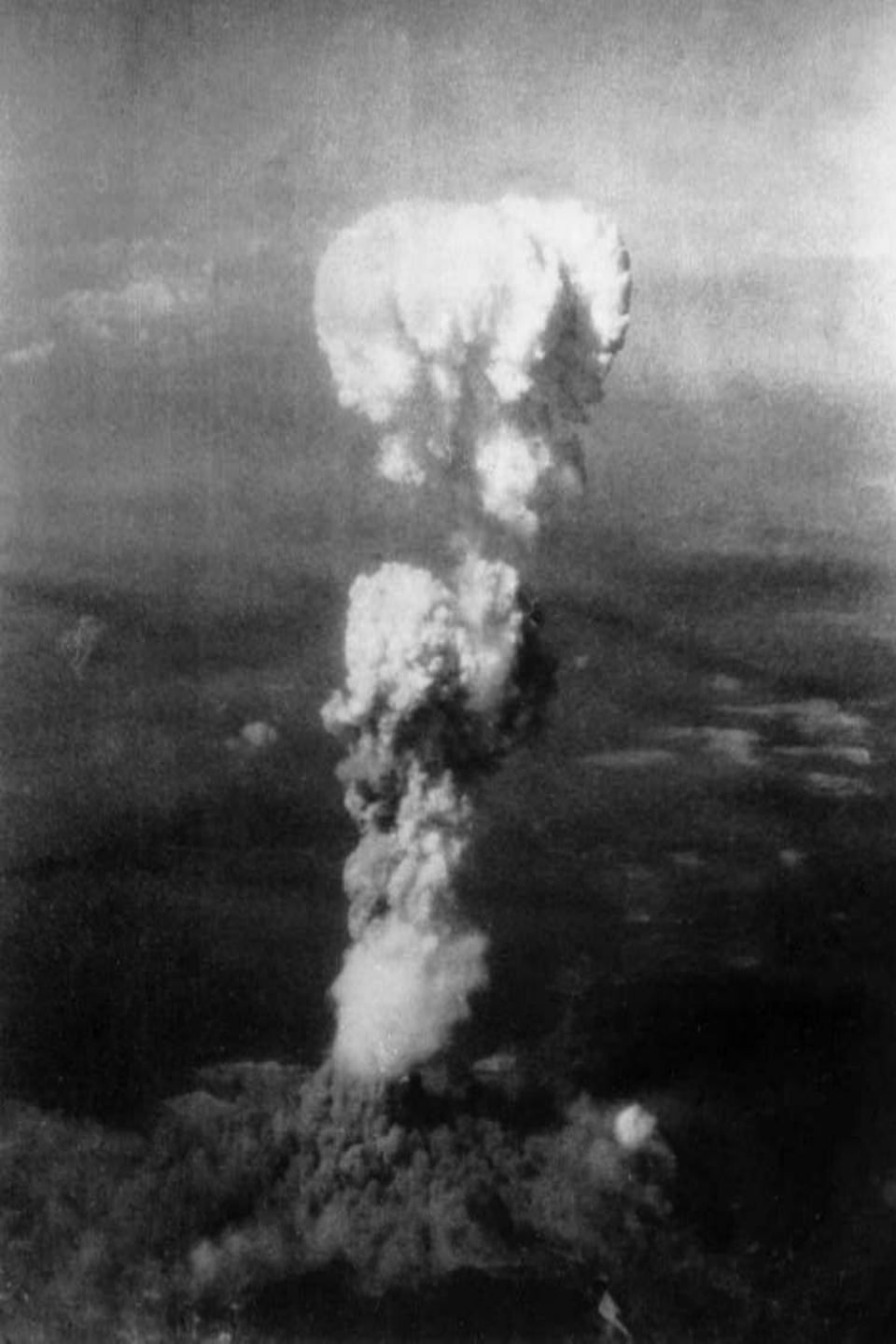


Tinian











Paul W. Tibbets
Col. USAF
Pilot, The Enola Gay



**Hiroshima &
Nagasaki
Then & Now**



www.litchapala.org

rda@rossarnold.net

